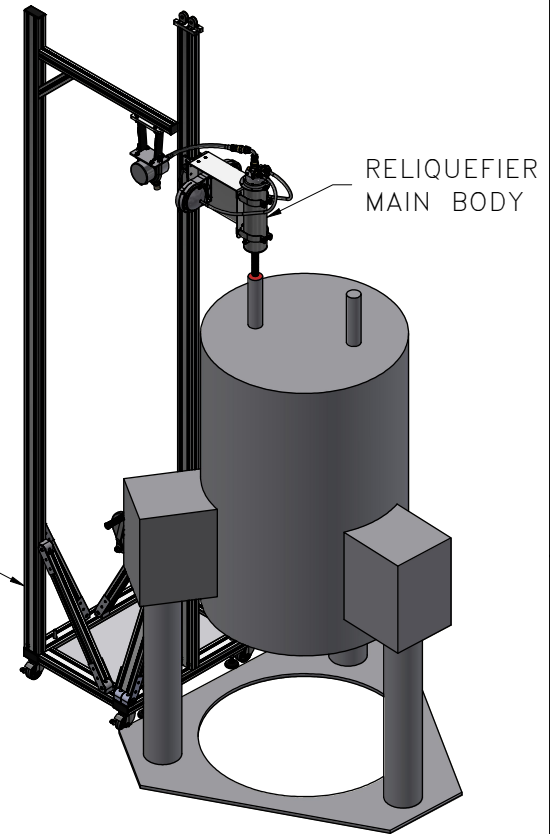
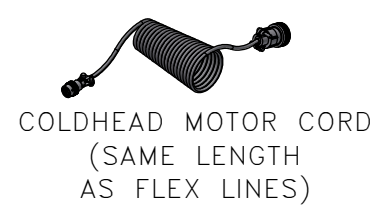
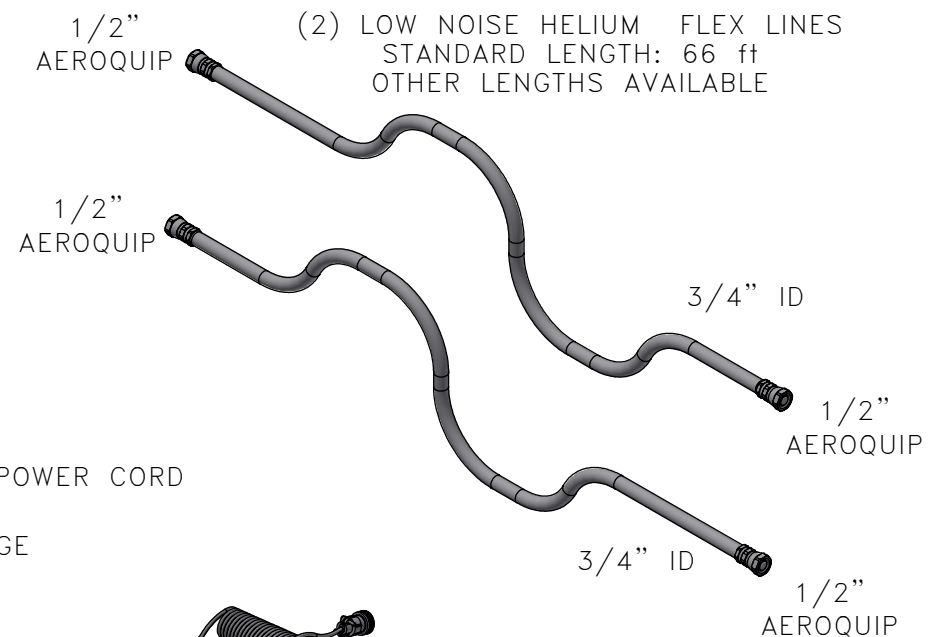
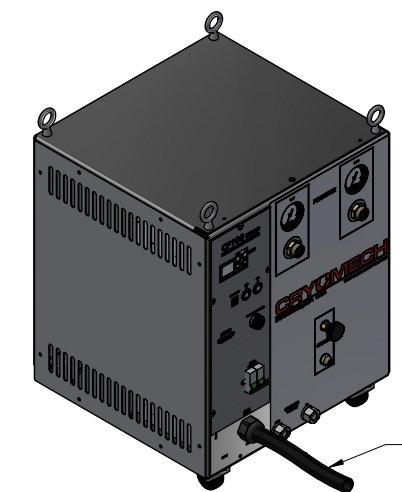


ALL INFORMATION CONTAINED IN THIS DOCUMENT SHOULD BE USED FOR REFERENCE PURPOSES ONLY & ARE SUBJECT TO CHANGE WITHOUT PRIOR NOTIFICATION. ALSO, THIS DOCUMENT IS CONSIDERED PROPRIETARY & THE SOLE PROPERTY OF BLUEFORS CRYOCOOLER TECHNOLOGIES INC. & SHOULD NOT BE REPRODUCED IN ANY MANNER WITHOUT PRIOR WRITTEN APPROVAL.

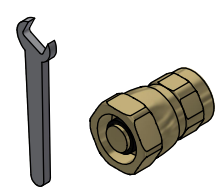
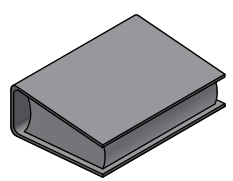
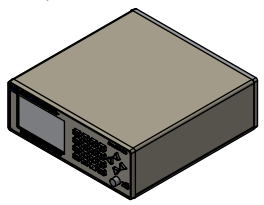
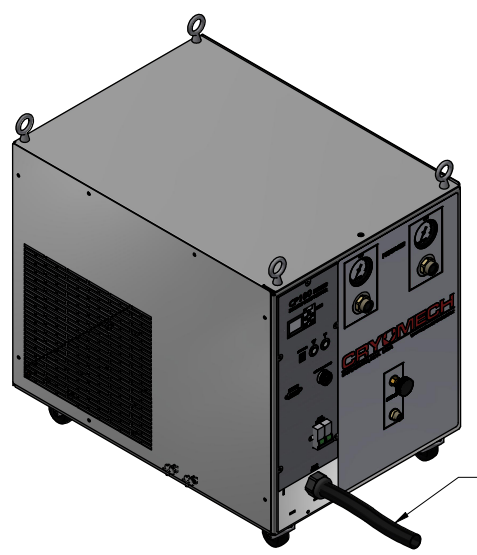
B

B



A

A



THIRD ANGLE PROJECTION

CRYOMECH
BLUEFORS CRYOCOOLER TECHNOLOGIES INC.
SYRACUSE, NY U.S.A. WWW.CRYOMECH.COM

UNLESS OTHERWISE SPECIFIED: ALL DIMENSIONS ARE IN INCHES
ALTERNATE UNITS IN "[]" ARE FOR REFERENCE ONLY
TOLERANCES: X & X 1/2 = ±1/16, X.XXX = ±.005, X.XX = ±.01
CIRCULAR RUNOUT .005 TIR, ANGULARITY .005, ALLOVER FINISH 25 Ra

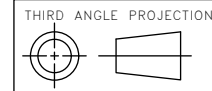
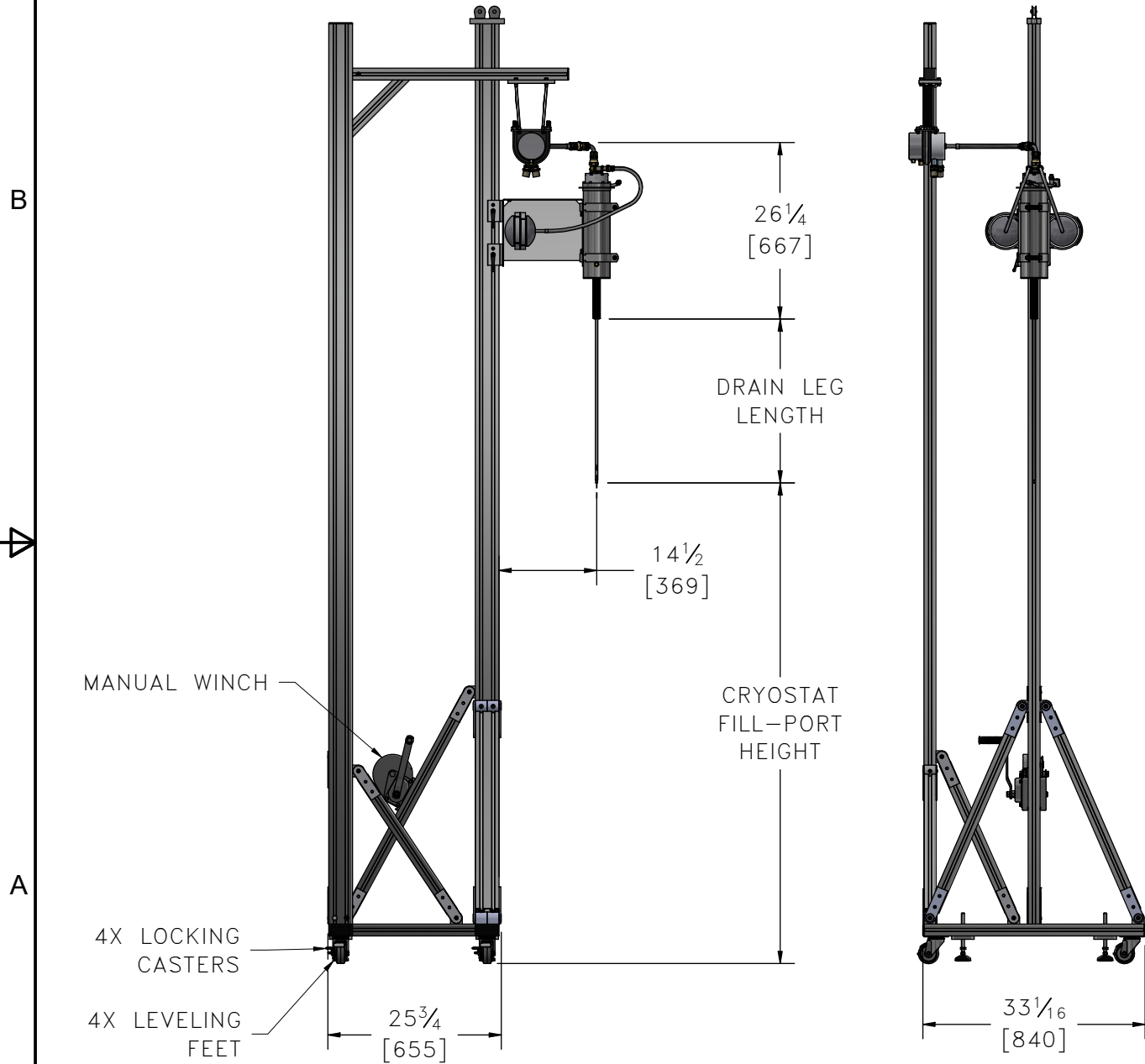
NAME: HeRL01-CP103 SYSTEM DRAWING			
DWG #: HeRL01-CP103 SYS		SHT 1 OF 2	
MATERIAL: AS STATED			
DWN BY: GJG	DATE: 01MAY26	SCALE: 1:2	DWG SIZE: A
1ST CHK: -	DATE: -	2ND CHK: -	DATE: -
CUST: -		BTA: -	

TBD	-	-	R&D	05MAY26	1ST CHK: -	DATE: -	2ND CHK: -	DATE: -
ECN	ZONE	REV	DESCRIPTION	DATE	CUST: -		BTA: -	

2

1

ALL INFORMATION CONTAINED IN THIS DOCUMENT SHOULD BE USED FOR REFERENCE PURPOSES ONLY & ARE SUBJECT TO CHANGE WITHOUT PRIOR NOTIFICATION. ALSO, THIS DOCUMENT IS CONSIDERED PROPRIETARY & THE SOLE PROPERTY OF BLUEFORS CRYOCOOLER TECHNOLOGIES INC. & SHOULD NOT BE REPRODUCED IN ANY MANNER WITHOUT PRIOR WRITTEN APPROVAL.



CRYOMECH
 BLUEFORS CRYOCOOLER TECHNOLOGIES INC.
 SYRACUSE, NY U.S.A. WWW.CRYOMECH.COM

UNLESS OTHERWISE SPECIFIED: ALL DIMENSIONS ARE IN INCHES
 ALTERNATE UNITS IN "[]" ARE FOR REFERENCE ONLY
 TOLERANCES: X & X 1/2 = ±1/6, X.XXX = ±.005, X.XX = ±.01
 CIRCULAR RUNOUT .005 TIR, ANGULARITY .005, ALLOVER FINISH 25 R_a

NAME: HeRL01-CP103 SYSTEM DRAWING			
DWG #: HeRL01-CP103 SYS		SHT 2 OF 2	
MATERIAL: AS STATED			
DWN BY: GJG	DATE: 01MAY26	SCALE: 1 : 24	DWG SIZE: A
1ST CHK:	DATE: -	2ND CHK:	DATE: -
CUST: -		BTA: -	