

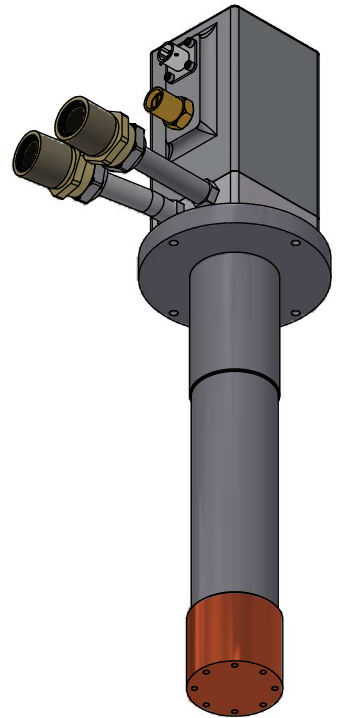
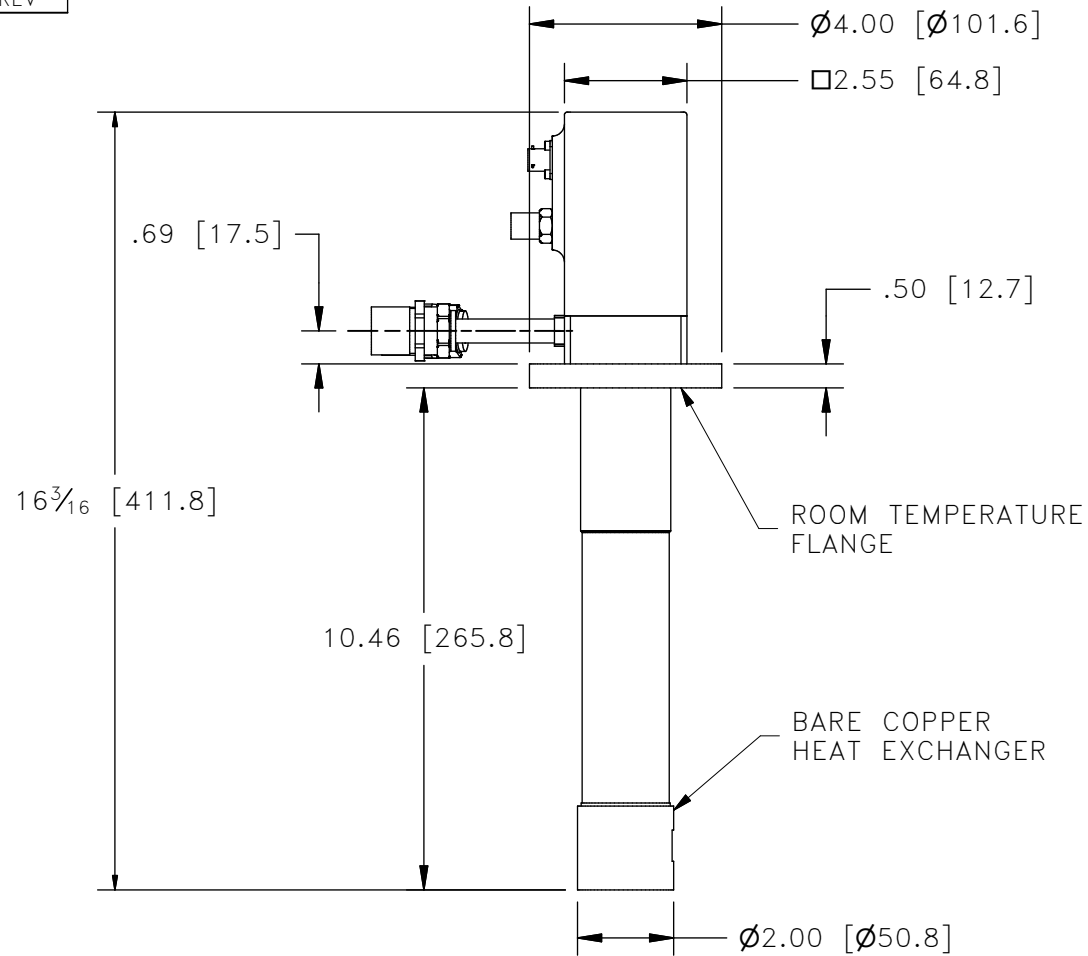
CH10063A REV -

1  
ALL INFORMATION CONTAINED IN THIS DOCUMENT SHOULD BE USED FOR REFERENCE PURPOSES ONLY & ARE SUBJECT TO CHANGE WITHOUT PRIOR NOTIFICATION. ALSO, THIS DOCUMENT IS CONSIDERED PROPRIETARY & THE SOLE PROPERTY OF BLUEFORS CRYOCOOLER TECHNOLOGIES INC. & SHOULD NOT BE REPRODUCED IN ANY MANNER WITHOUT PRIOR WRITTEN APPROVAL.

B

A

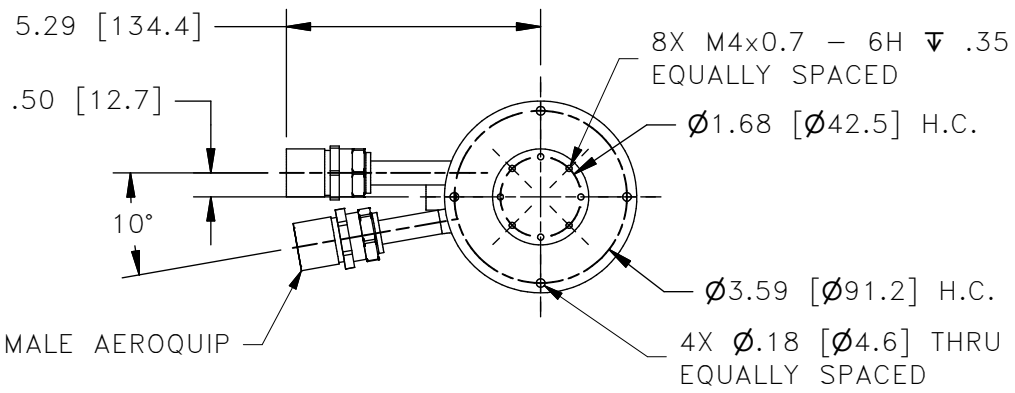
A



B

A

A



THIRD ANGLE PROJECTION

**CRYOMECH**  
BLUEFORS CRYOCOOLER TECHNOLOGIES INC.  
SYRACUSE, NY U.S.A. WWW.CRYOMECH.COM

UNLESS OTHERWISE SPECIFIED: ALL DIMENSIONS ARE IN INCHES  
ALTERNATE UNITS IN "[ ]" ARE FOR REFERENCE ONLY  
TOLERANCES: X & X  $\frac{XX}{XX}$  =  $\pm \frac{1}{16}$ , X.XXX =  $\pm .005$ , X.XX =  $\pm .01$   
CIRCULAR RUNOUT .005 TIR, ANGULARITY .005, ALLOVER FINISH 25 Ra

NAME: AL63 COLDHEAD, STANDARD			
DWG #: CH10063A		SHT 1 OF 1	
MATERIAL: 103-783			
DWN BY: JRB	DATE: 12DEC22	SCALE: 1:4	DWG SIZE: A
1ST CHK: GJG	DATE: 03JAN23	2ND CHK: MRR	DATE: 26JAN23
CUST: -		BTA: BTA-CH10063	

THIS DRAWING SUPERSEDES CH10063

5300	-	-	INITIAL RELEASE	12DEC22
ECN	ZONE	REV	DESCRIPTION	DATE

2

1