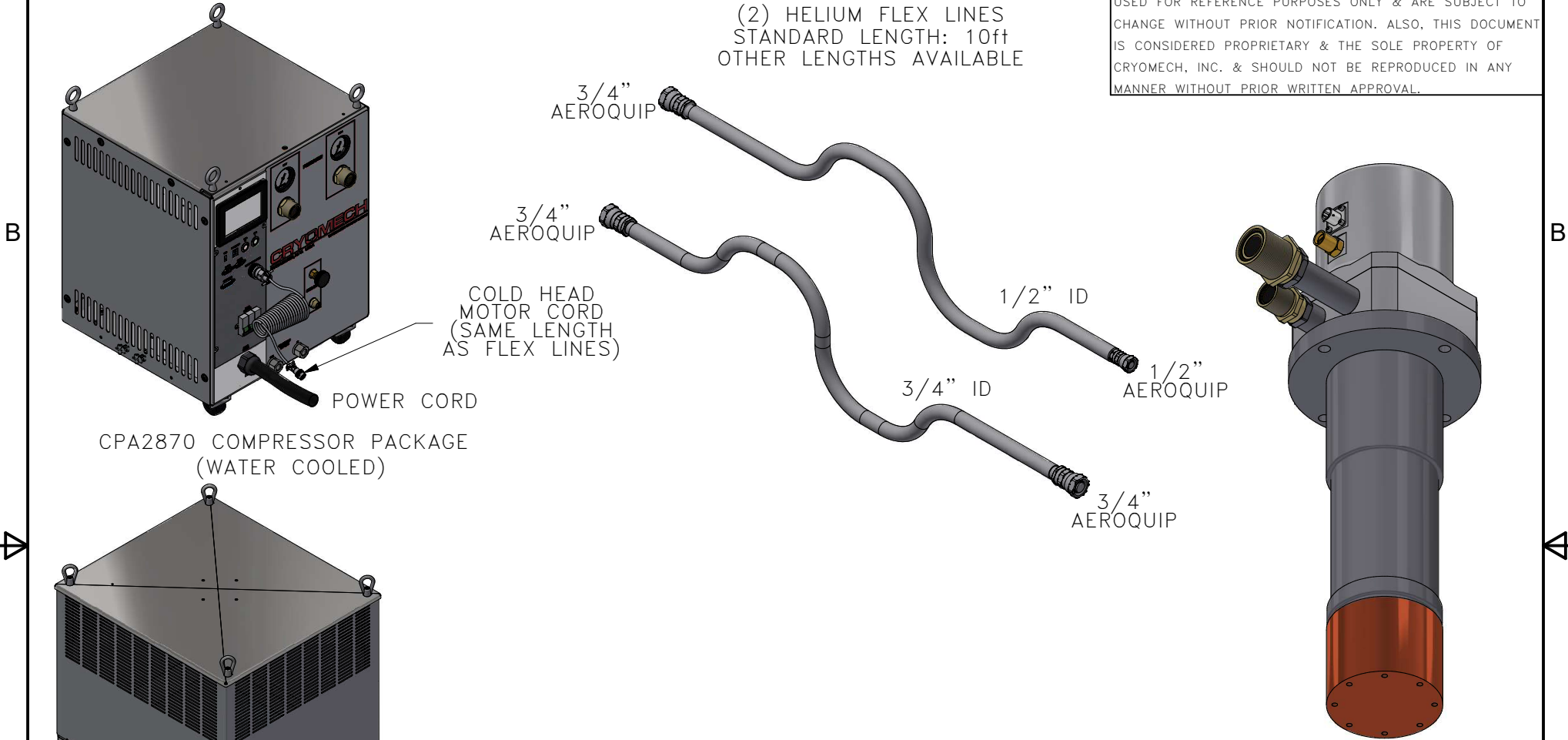


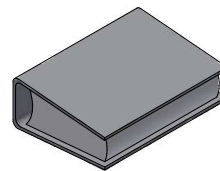
ALL INFORMATION CONTAINED IN THIS DOCUMENT SHOULD BE USED FOR REFERENCE PURPOSES ONLY & ARE SUBJECT TO CHANGE WITHOUT PRIOR NOTIFICATION. ALSO, THIS DOCUMENT IS CONSIDERED PROPRIETARY & THE SOLE PROPERTY OF CRYOMECH, INC. & SHOULD NOT BE REPRODUCED IN ANY MANNER WITHOUT PRIOR WRITTEN APPROVAL.

(2) HELIUM FLEX LINES  
STANDARD LENGTH: 10ft  
OTHER LENGTHS AVAILABLE

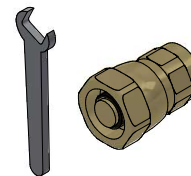


AL330 COLD HEAD

MANUAL



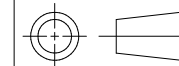
TOOL KIT



COLD HEAD  
MOTOR CORD  
(SAME LENGTH  
AS FLEX LINES)

POWER CORD

THIRD ANGLE PROJECTION



**CRYOMECH, INC.**

SYRACUSE, NY U.S.A. WWW.CRYOMECH.COM

UNLESS OTHERWISE SPECIFIED: ALL DIMENSIONS ARE IN INCHES  
ALTERNATE UNITS IN "[ ]" ARE FOR REFERENCE ONLY  
TOLERANCES: X & X <sup>1</sup>/<sub>2</sub> = ±1/16, X.XXX = ±.005, X.XX = ±.01  
CIRCULAR RUNOUT .005 TIR, ANGULARITY .005, ALLOVER FINISH 25 Ra

NAME: AL330 CPA2800 CRYOCOOLER

DWG #: AL330 CPA2800 SYSTEM SHT 1 OF 1

MATERIAL: AS STATED

DWN BY: CJS DATE: 28NOV16 SCALE: 1:2 DWG SIZE: A

1ST CHK: EP DATE: 08DEC16 2ND CHK: PB DATE: 08DEC16

CUST: - BTA: -

3873	-	-	INITIAL RELEASE	28NOV16	1ST CHK: EP	DATE: 08DEC16	2ND CHK: PB	DATE: 08DEC16
ECN	ZONE	REV	DESCRIPTION	DATE	CUST: -		BTA: -	