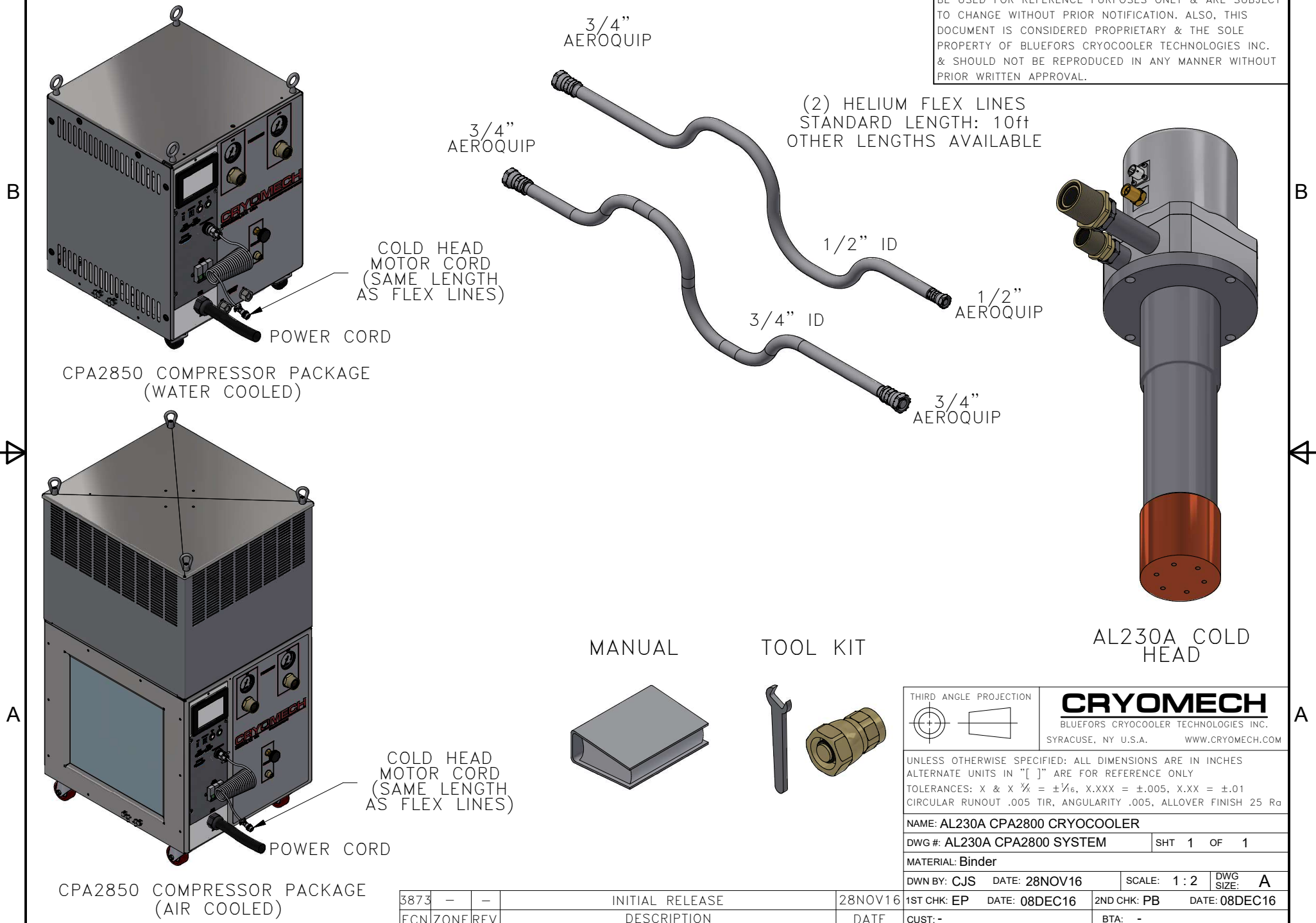
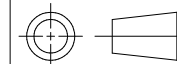


ALL INFORMATION CONTAINED IN THIS DOCUMENT SHOULD BE USED FOR REFERENCE PURPOSES ONLY & ARE SUBJECT TO CHANGE WITHOUT PRIOR NOTIFICATION. ALSO, THIS DOCUMENT IS CONSIDERED PROPRIETARY & THE SOLE PROPERTY OF BLUEFORS CRYOCOOLER TECHNOLOGIES INC. & SHOULD NOT BE REPRODUCED IN ANY MANNER WITHOUT PRIOR WRITTEN APPROVAL.



THIRD ANGLE PROJECTION

**CRYOMECH**

BLUEFORS CRYOCOOLER TECHNOLOGIES INC.

SYRACUSE, NY U.S.A.

WWW.CRYOMECH.COM

UNLESS OTHERWISE SPECIFIED: ALL DIMENSIONS ARE IN INCHES
 ALTERNATE UNITS IN "[]" ARE FOR REFERENCE ONLY
 TOLERANCES: X & X 1/4 = ±1/16, X.XXX = ±.005, X.XX = ±.01
 CIRCULAR RUNOUT .005 TIR, ANGULARITY .005, ALLOVER FINISH 25 Ra

NAME: AL230A CPA2800 CRYOCOOLER

DWG #: AL230A CPA2800 SYSTEM

SHT 1 OF 1

MATERIAL: Binder

DWN BY: CJS DATE: 28NOV16

SCALE: 1:2

DWG SIZE: A

1ST CHK: EP DATE: 08DEC16

2ND CHK: PB DATE: 08DEC16

CUST: -

BTA: -

3873	-	-
ECN	ZONE	REV

INITIAL RELEASE

28NOV16

DESCRIPTION

DATE