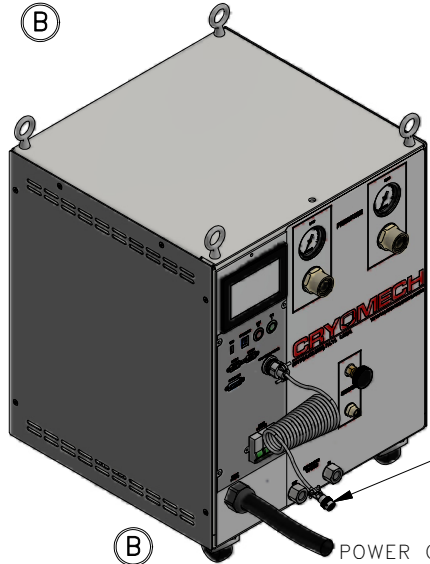


ALL INFORMATION CONTAINED IN THIS DOCUMENT SHOULD BE USED FOR REFERENCE PURPOSES ONLY & ARE SUBJECT TO CHANGE WITHOUT PRIOR NOTIFICATION. ALSO, THIS DOCUMENT IS CONSIDERED PROPRIETARY & THE SOLE PROPERTY OF CRYOMECH, INC. & SHOULD NOT BE REPRODUCED IN ANY MANNER WITHOUT PRIOR WRITTEN APPROVAL.



CPA2850 COMPRESSOR PACKAGE (WATER COOLED)



CPA2850 COMPRESSOR PACKAGE (AIR COOLED)

3/4" AEROQUIP

3/4" AEROQUIP

(2) HELIUM FLEX LINES
STANDARD LENGTH: 10ft
OTHER LENGTHS AVAILABLE

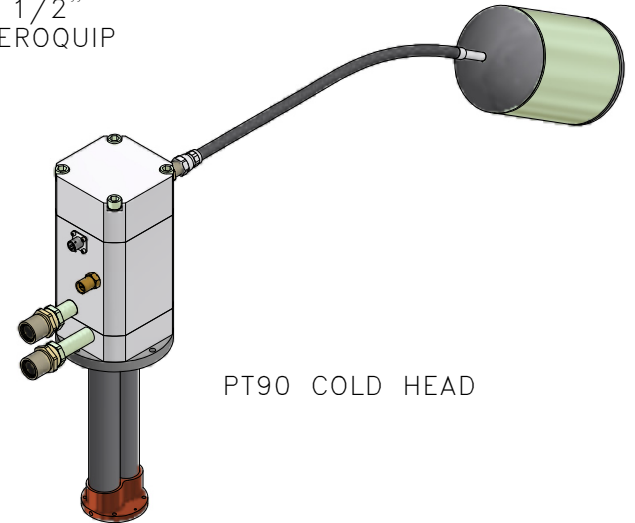
COLD HEAD MOTOR CORD
(SAME LENGTH AS FLEX LINES)

3/4" ID

1/2" AEROQUIP

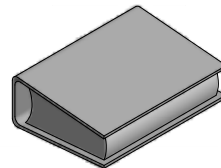
1/2" ID

1/2" AEROQUIP

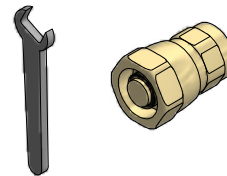


PT90 COLD HEAD

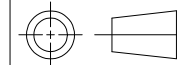
MANUAL



TOOL KIT



THIRD ANGLE PROJECTION



CRYOMECH, INC

113 FALSO DRIVE SYRACUSE, N.Y. 13211
Tel: (315)455-2555 Fax:(315)455-2544

ALL DIMENSIONS ARE IN INCHES
TOLERANCES: FRACTIONS ±1/32 DECIMALS XXX=±.005 XX=±.01 X=±.1
ANGLES ±.5° ALLOVER FINISH 25 Ra
CONCENTRICITY .005 TOTAL INDICATOR RUN OUT
PERPENDICULAR ±.002 (UNLESS OTHERWISE SPECIFIED)

NAME: PT90-CPA2800 CRYOREFRIGERATOR

DWG #: PT90-CPA2800 SYSTEM SHT 1 OF 1

MATERIAL: AS STATED

DWN BY: BMR DATE: 27JUN12 SCALE: TO FIT DWG SIZE: A

1ST CHK: PB DATE: 27JUN12 2ND CHK: BS DATE: 27JUN12

CUST: - BTA: -

ECN	ZONE	REV	DESCRIPTION	DATE
3745	-	B	UPDATED COMPRESSOR PACKAGES	26MAY16
3072	-	A	ADDED AIR COOLED COMPRESSOR	29JUL13
2884	-	-	INITIAL RELEASE	27JUN12