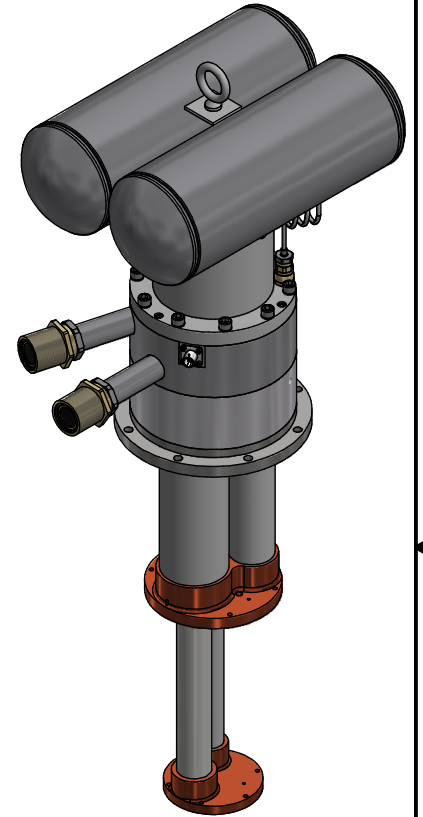
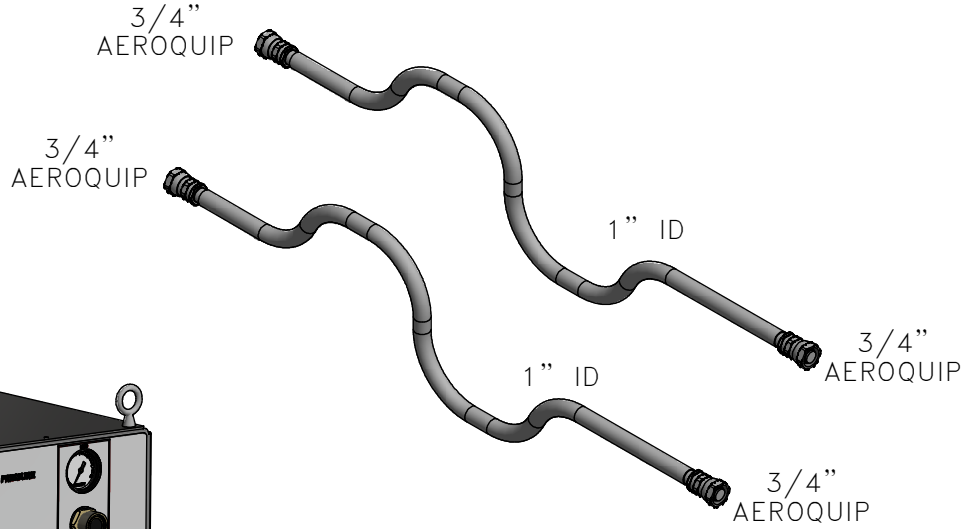
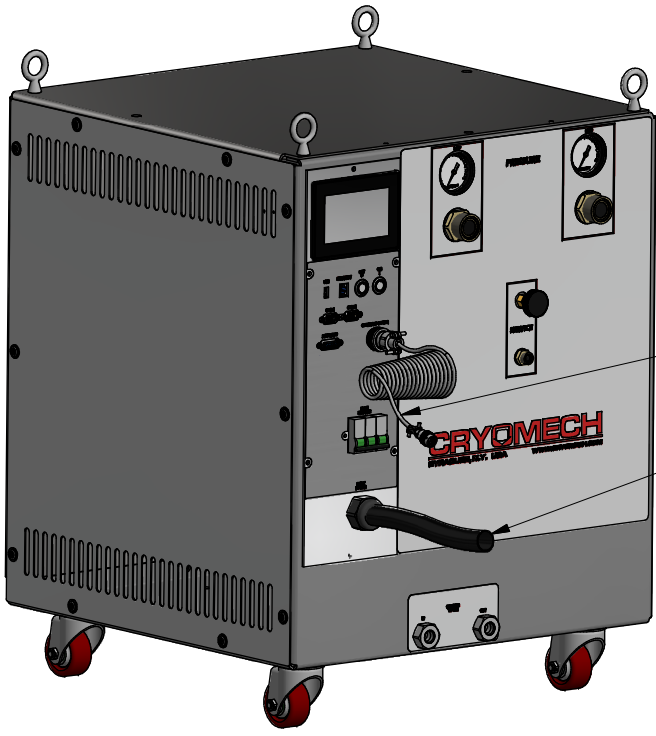


ALL INFORMATION CONTAINED IN THIS DOCUMENT SHOULD BE USED FOR REFERENCE PURPOSES ONLY & ARE SUBJECT TO CHANGE WITHOUT PRIOR NOTIFICATION. ALSO, THIS DOCUMENT IS CONSIDERED PROPRIETARY & THE SOLE PROPERTY OF CRYOMECH, INC. & SHOULD NOT BE REPRODUCED IN ANY MANNER WITHOUT PRIOR WRITTEN APPROVAL.

(2) LOW NOISE HELIUM FLEX LINES
STANDARD LENGTH: 66 ft
OTHER LENGTHS AVAILABLE



PT820 COLD HEAD

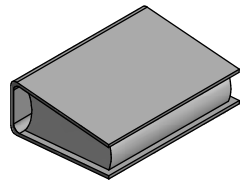


CPA1114 COMPRESSOR PACKAGE
(WATER COOLED)

COLD HEAD MOTOR CORD
(SAME LENGTH AS FLEX LINES)

POWER CORD

MANUAL



TOOL KIT



THIRD ANGLE PROJECTION				CRYOMECH, INC 113 FALSO DRIVE SYRACUSE, N.Y. 13211 Tel: (315)455-2555 Fax:(315)455-2544	
ALL DIMENSIONS ARE IN INCHES TOLERANCES: FRACTIONS ±1/32 DECIMALS XXX=±.005 XX=±.01 X=±.1 ANGLES ±.5° ALLOVER FINISH 25 Ra CONCENTRICITY .005 TOTAL INDICATOR RUN OUT PERPENDICULAR ±.002 (UNLESS OTHERWISE SPECIFIED)					
NAME: PT820 CPA1114 CRYOREFRIGERATOR					
DWG #: PT820 CPA1114 SYSTEM				SHT 1 OF 1	
MATERIAL: AS STATED					
DWN BY: ADF		DATE: 10JUL18		SCALE: TO FIT DWG SIZE: A	
1ST CHK: TJH		DATE: 11JUL18		2ND CHK: PB DATE: 11JUL18	
CUST: -				BTA: -	

4254	-	-	INITIAL RELEASE	10JUL18
ECN	ZONE	REV	DESCRIPTION	DATE