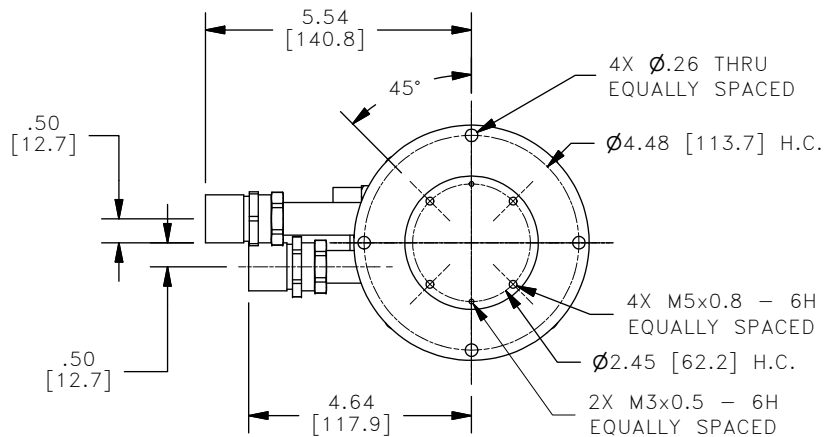
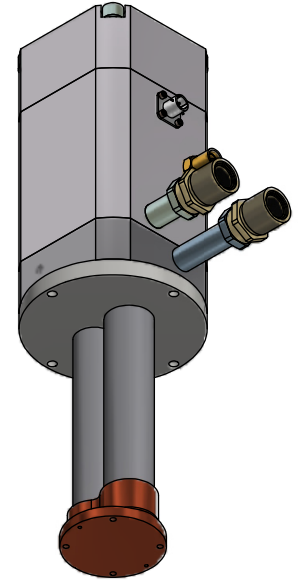
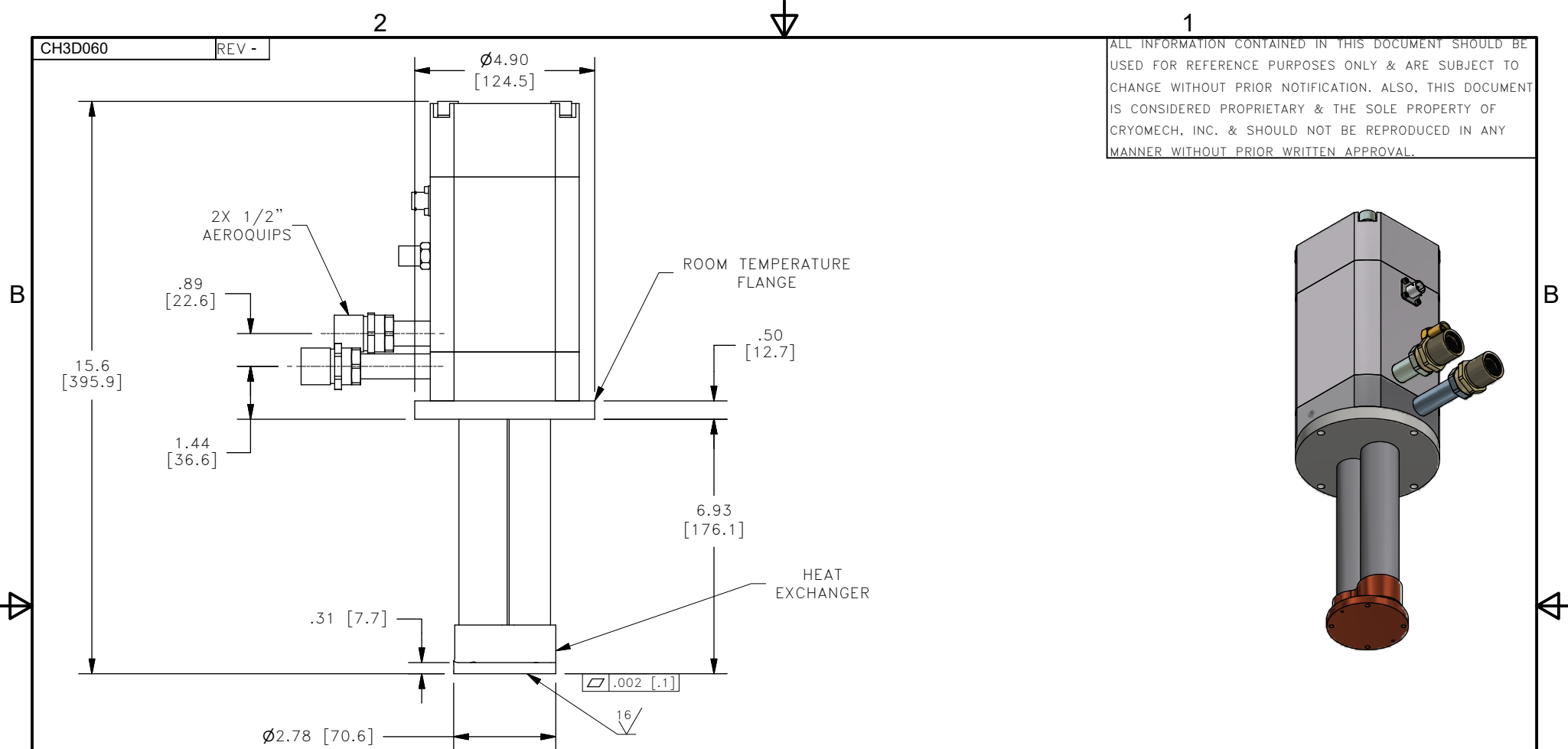
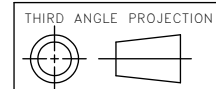


CH3D060 REV -

ALL INFORMATION CONTAINED IN THIS DOCUMENT SHOULD BE USED FOR REFERENCE PURPOSES ONLY & ARE SUBJECT TO CHANGE WITHOUT PRIOR NOTIFICATION. ALSO, THIS DOCUMENT IS CONSIDERED PROPRIETARY & THE SOLE PROPERTY OF CRYOMECH, INC. & SHOULD NOT BE REPRODUCED IN ANY MANNER WITHOUT PRIOR WRITTEN APPROVAL.



****SPECIAL NOTE: COLDHEAD MUST BE OPERATED COLD END DOWN****



CRYOMECH, INC
 113 FALSO DRIVE SYRACUSE, N.Y. 13211
 Tel: (315)455-2555 Fax:(315)455-2544

ALL DIMENSIONS ARE IN INCHES
 TOLERANCES: FRACTIONS ±1/32 DECIMALS XXX=±.005 XX=±.01 X=±.1
 ANGLES ±.5° ALLOVER FINISH 25 Ra
 CONCENTRICITY .005 TOTAL INDICATOR RUN OUT
 PERPENDICULAR ±.002 (UNLESS OTHERWISE SPECIFIED)

NAME: CH3D060 OUTLINE DRAWING			
DWG #: CH3D060		SHT 1 OF 1	
MATERIAL: 103-565			
DWN BY: ADF	DATE: 05JAN18	SCALE: 1:4	DWG SIZE: A
1ST CHK: EP	DATE: 24JAN18	2ND CHK: PB	DATE: 24JAN18
CUST: -		BTA: BTA-CH30060_63	

THIS DRAWING SUPERSEDES CH3C060

4130	-	-	INITIAL RELEASE	05JAN18
ECN	ZONE	REV	DESCRIPTION	DATE