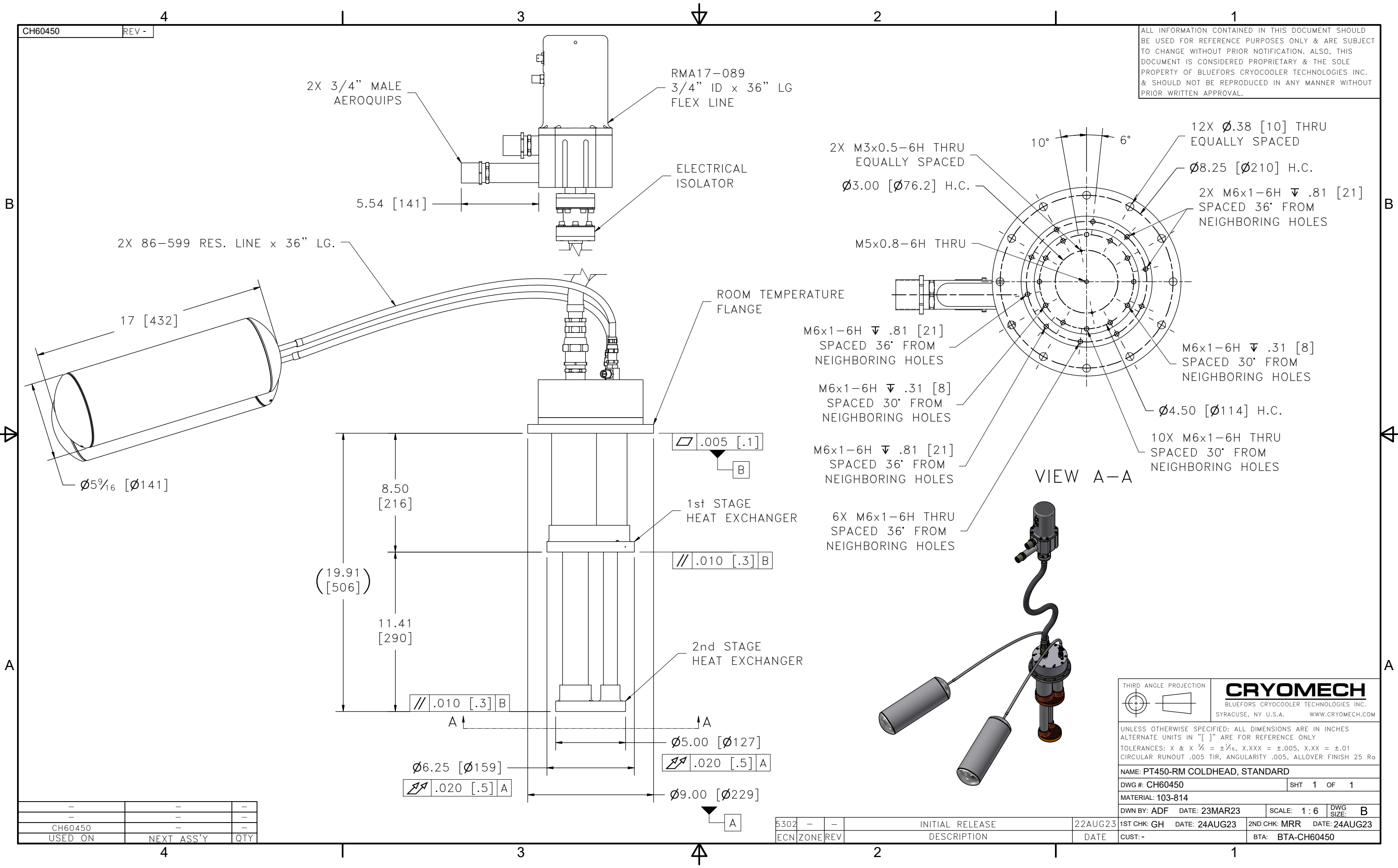


ALL INFORMATION CONTAINED IN THIS DOCUMENT SHOULD BE USED FOR REFERENCE PURPOSES ONLY & ARE SUBJECT TO CHANGE WITHOUT PRIOR NOTIFICATION. ALSO, THIS DOCUMENT IS CONSIDERED PROPRIETARY & THE SOLE PROPERTY OF BLUEFORS CRYOCOOLER TECHNOLOGIES INC. & SHOULD NOT BE REPRODUCED IN ANY MANNER WITHOUT PRIOR WRITTEN APPROVAL.



-	-	-
CH60450	-	-
USED ON	NEXT ASS'Y	QTY

5302	-	-	INITIAL RELEASE	22AUG23
ECN	ZONE	REV	DESCRIPTION	DATE
			SCALE: 1:6	DWG SIZE: B
DWN BY: ADF		DATE: 23MAR23	1ST CHK: GH	DATE: 24AUG23
MATERIAL: 103-814		2ND CHK: MRR	DATE: 24AUG23	BTA: BTA-CH60450

THIRD ANGLE PROJECTION

**CRYOMECH**  
BLUEFORS CRYOCOOLER TECHNOLOGIES INC.  
SYRACUSE, NY U.S.A. WWW.CRYOMECH.COM

UNLESS OTHERWISE SPECIFIED: ALL DIMENSIONS ARE IN INCHES  
ALTERNATE UNITS IN "[ ]" ARE FOR REFERENCE ONLY  
TOLERANCES: X & X 1/2 = ±1/16, X.XXX = ±.005, X.XX = ±.01  
CIRCULAR RUNOUT .005 TIR, ANGULARITY .005, ALLOVER FINISH 25 Ra

NAME: PT450-RM COLDHEAD, STANDARD				
DWG #: CH60450		SHT 1 OF 1		
DWN BY: ADF DATE: 23MAR23 SCALE: 1:6 DWG SIZE: B				
1ST CHK: GH DATE: 24AUG23		2ND CHK: MRR DATE: 24AUG23		
CUST: -		BTA: BTA-CH60450		