

ALL INFORMATION CONTAINED IN THIS DOCUMENT SHOULD BE USED FOR REFERENCE PURPOSES ONLY & ARE SUBJECT TO CHANGE WITHOUT PRIOR NOTIFICATION. ALSO, THIS DOCUMENT IS CONSIDERED PROPRIETARY & THE SOLE PROPERTY OF CRYOMECH, INC. & SHOULD NOT BE REPRODUCED IN ANY MANNER WITHOUT PRIOR WRITTEN APPROVAL.

(2) LOW NOISE HELIUM FLEX LINES
STANDARD LENGTH: 66 ft
OTHER LENGTHS AVAILABLE

3/4" AEROQUIP

3/4" AEROQUIP

1" ID

1" ID

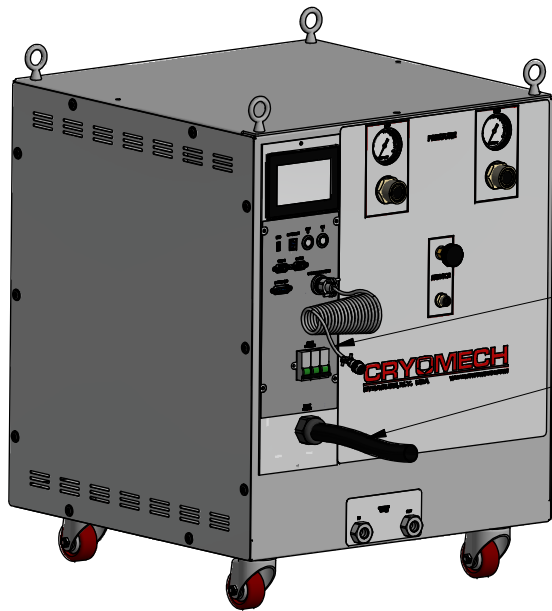
3/4" AEROQUIP

3/4" AEROQUIP

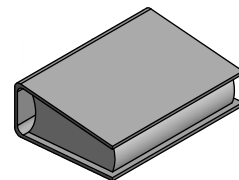
COLD HEAD MOTOR CORD
(SAME LENGTH AS FLEX LINES)

POWER CORD

PT420-RM COLD HEAD



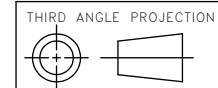
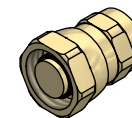
CPA1114 COMPRESSOR PACKAGE
(WATER COOLED)



MANUAL



TOOL KIT



THIRD ANGLE PROJECTION

CRYOMECH, INC

113 FALSO DRIVE SYRACUSE, N.Y. 13211
Tel: (315)455-2555 Fax:(315)455-2544

ALL DIMENSIONS ARE IN INCHES
TOLERANCES: FRACTIONS ±1/32 DECIMALS XXX=±.005 XX=±.01 X=±.1
ANGLES ±.5° ALLOVER FINISH 25 Ra
CONCENTRICITY .005 TOTAL INDICATOR RUN OUT
PERPENDICULAR ±.002 (UNLESS OTHERWISE SPECIFIED)

NAME: PT420-RM CPA1114 CRYOREFRIGERATOR

DWG #: PT420-RM CPA1114 SYSTEM

SHT 1 OF 1

MATERIAL: AS STATED

DWN BY: CJS DATE: 29MAR17

SCALE: TO FIT

DWG SIZE: A

3946	-	-
ECN	ZONE	REV

INITIAL RELEASE

29MAR17

DESCRIPTION

DATE

1ST CHK: NLO DATE: 29MAR17

2ND CHK: PB

DATE: 29MAR17

CUST: -

BTA: -