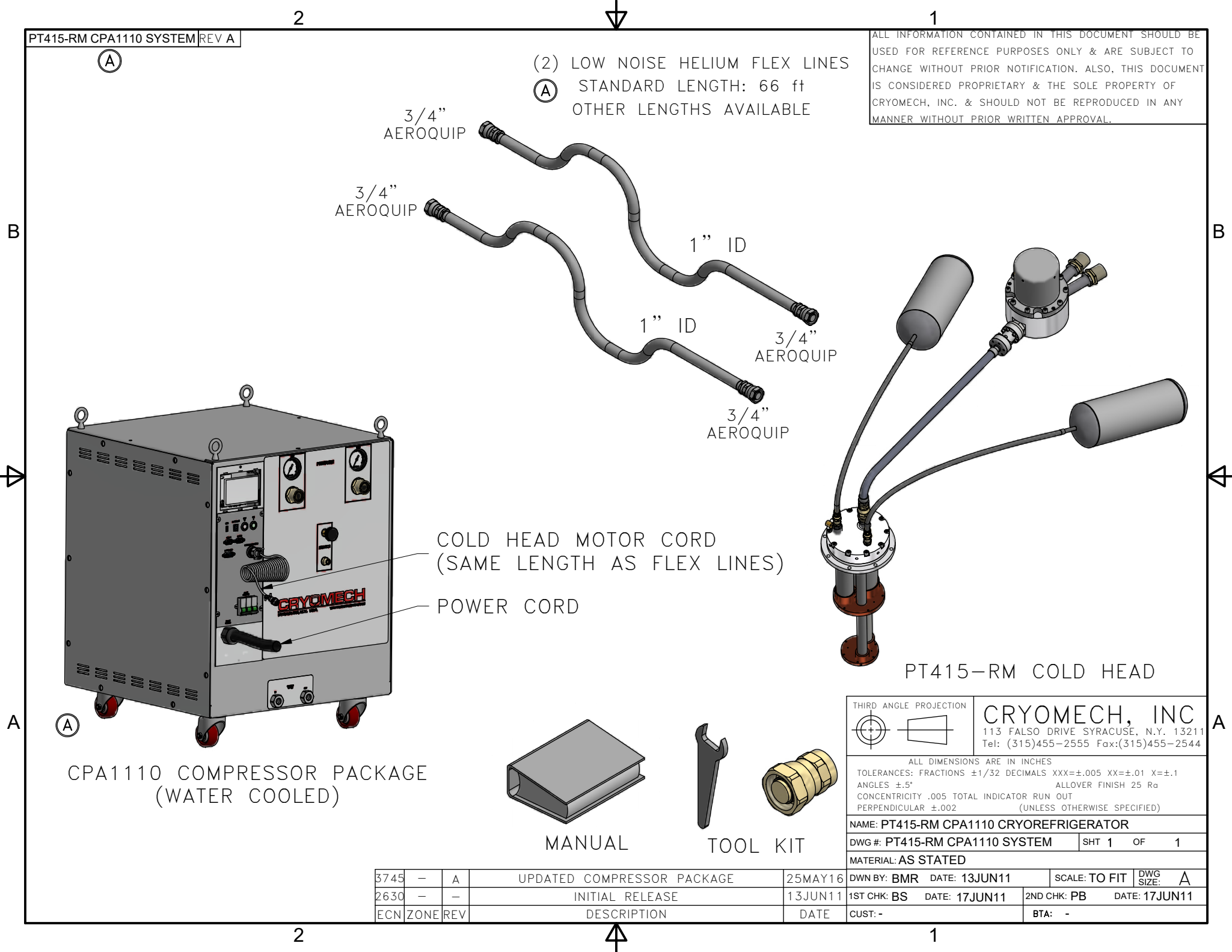


ALL INFORMATION CONTAINED IN THIS DOCUMENT SHOULD BE USED FOR REFERENCE PURPOSES ONLY & ARE SUBJECT TO CHANGE WITHOUT PRIOR NOTIFICATION. ALSO, THIS DOCUMENT IS CONSIDERED PROPRIETARY & THE SOLE PROPERTY OF CRYOMECH, INC. & SHOULD NOT BE REPRODUCED IN ANY MANNER WITHOUT PRIOR WRITTEN APPROVAL.



(2) LOW NOISE HELIUM FLEX LINES
 (A) STANDARD LENGTH: 66 ft
 OTHER LENGTHS AVAILABLE

3/4" AEROQUIP

3/4" AEROQUIP

1" ID

1" ID

3/4" AEROQUIP

3/4" AEROQUIP

COLD HEAD MOTOR CORD
 (SAME LENGTH AS FLEX LINES)

POWER CORD

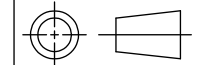
PT415-RM COLD HEAD

CPA1110 COMPRESSOR PACKAGE
 (WATER COOLED)

MANUAL

TOOL KIT

THIRD ANGLE PROJECTION



CRYOMECH, INC

113 FALSO DRIVE SYRACUSE, N.Y. 13211
 Tel: (315)455-2555 Fax:(315)455-2544

ALL DIMENSIONS ARE IN INCHES
 TOLERANCES: FRACTIONS ±1/32 DECIMALS XXX=±.005 XX=±.01 X=±.1
 ANGLES ±.5° ALLOVER FINISH 25 Ra
 CONCENTRICITY .005 TOTAL INDICATOR RUN OUT
 PERPENDICULAR ±.002 (UNLESS OTHERWISE SPECIFIED)

NAME: PT415-RM CPA1110 CRYOREFRIGERATOR

DWG #: PT415-RM CPA1110 SYSTEM

SHT 1 OF 1

MATERIAL: AS STATED

3745	-	A	UPDATED COMPRESSOR PACKAGE	25MAY16
2630	-	-	INITIAL RELEASE	13JUN11
ECN	ZONE	REV	DESCRIPTION	DATE

DWN BY: BMR	DATE: 13JUN11	SCALE: TO FIT	DWG SIZE: A
1ST CHK: BS	DATE: 17JUN11	2ND CHK: PB	DATE: 17JUN11
CUST: -	BTA: -		