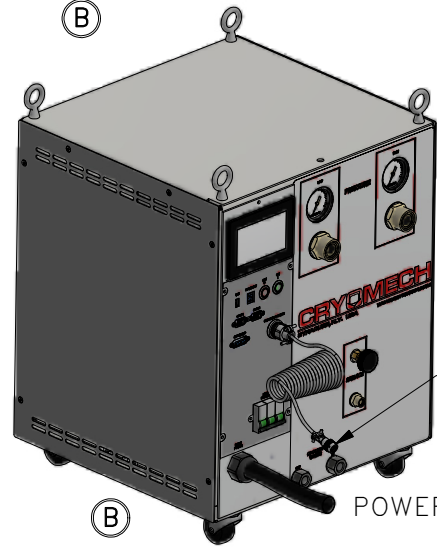
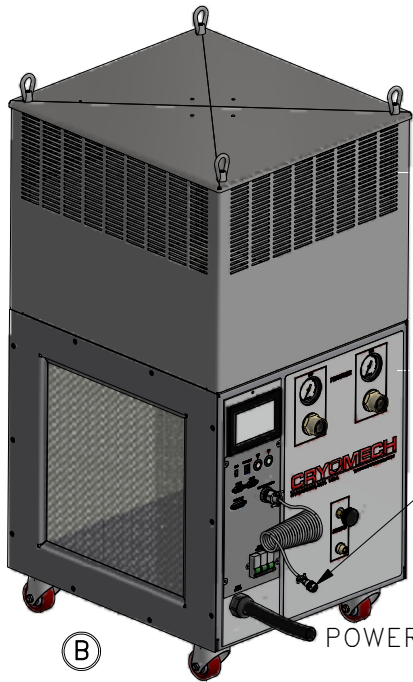


ALL INFORMATION CONTAINED IN THIS DOCUMENT SHOULD BE USED FOR REFERENCE PURPOSES ONLY & ARE SUBJECT TO CHANGE WITHOUT PRIOR NOTIFICATION. ALSO, THIS DOCUMENT IS CONSIDERED PROPRIETARY & THE SOLE PROPERTY OF CRYOMECH, INC. & SHOULD NOT BE REPRODUCED IN ANY MANNER WITHOUT PRIOR WRITTEN APPROVAL.



CPA2870 COMPRESSOR PACKAGE (WATER COOLED)



CPA2870 COMPRESSOR PACKAGE (AIR COOLED)

COLD HEAD MOTOR CORD (SAME LENGTH AS FLEX LINES)

POWER CORD

COLD HEAD MOTOR CORD (SAME LENGTH AS FLEX LINES)

POWER CORD

(2) HELIUM FLEX LINES  
STANDARD LENGTH: 10ft  
OTHER LENGTHS AVAILABLE

3/4" AEROQUIP

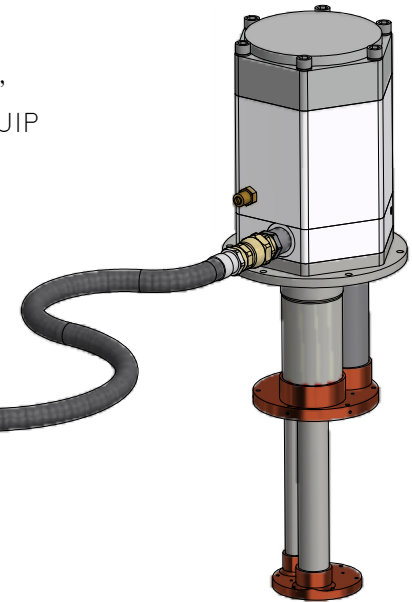
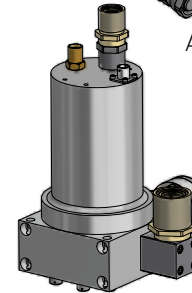
3/4" AEROQUIP

3/4" ID

3/4" ID

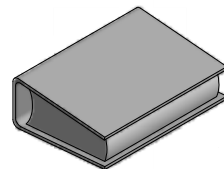
1/2" AEROQUIP

3/4" AEROQUIP

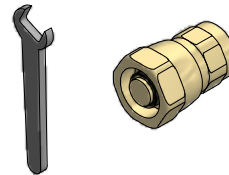


PT407-RM COLD HEAD

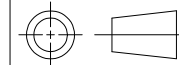
MANUAL



TOOL KIT



THIRD ANGLE PROJECTION



**CRYOMECH, INC**

113 FALSO DRIVE SYRACUSE, N.Y. 13211  
Tel: (315)455-2555 Fax:(315)455-2544

ALL DIMENSIONS ARE IN INCHES  
TOLERANCES: FRACTIONS ±1/32 DECIMALS XXX=±.005 XX=±.01 X=±.1  
ANGLES ±.5° ALLOVER FINISH 25 Ra  
CONCENTRICITY .005 TOTAL INDICATOR RUN OUT  
PERPENDICULAR ±.002 (UNLESS OTHERWISE SPECIFIED)

NAME: PT407-RM CPA2800 CRYOREFRIGERATOR

DWG #: PT407-RM CPA2800 SYSTEM SHT 1 OF 1

MATERIAL: AS STATED

DWN BY: BMR DATE: 08AUG07 SCALE: TO FIT DWG SIZE: A

1ST CHK: AO DATE: 08AUG07 2ND CHK: RED DATE: 08AUG07

CUST: - BTA: -

ECN	ZONE	REV	DESCRIPTION	DATE
3745	-	B	UPDATED COMPRESSOR PACKAGES	26MAY16
3072	A2	A	ADDED AIR COOLED COMPRESSOR	08MAY13
1432	-	-	INITIAL RELEASE	08AUG07