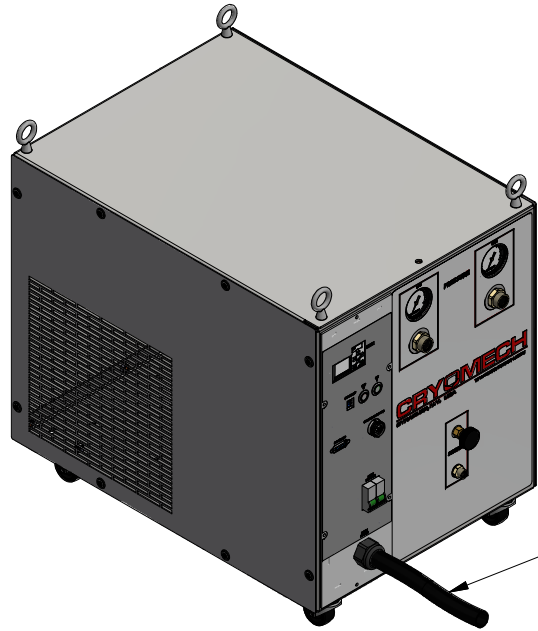


ALL INFORMATION CONTAINED IN THIS DOCUMENT SHOULD BE USED FOR REFERENCE PURPOSES ONLY & ARE SUBJECT TO CHANGE WITHOUT PRIOR NOTIFICATION. ALSO, THIS DOCUMENT IS CONSIDERED PROPRIETARY & THE SOLE PROPERTY OF CRYOMECH, INC. & SHOULD NOT BE REPRODUCED IN ANY MANNER WITHOUT PRIOR WRITTEN APPROVAL.

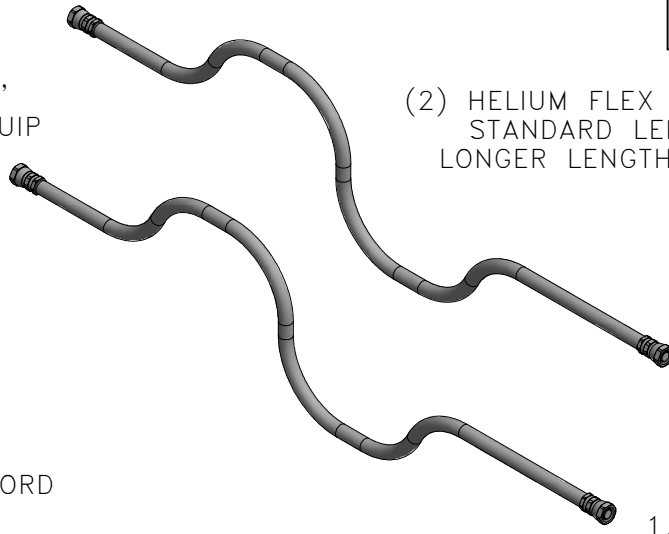
B

B



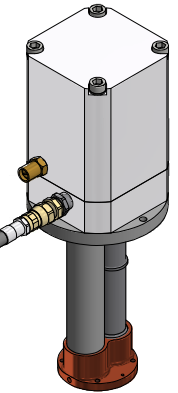
POWER CORD

1/2" AEROQUIP

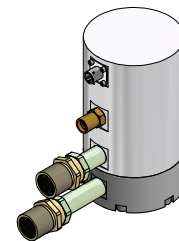


1/2" AEROQUIP

1/2" AEROQUIP



COLDHEAD MOTOR CORD (SAME LENGTH AS FLEX LINES)



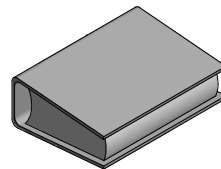
A

A

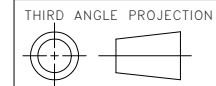
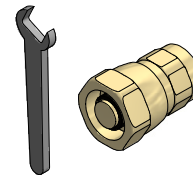


POWER CORD

MANUAL



TOOL KIT



CRYOMECH, INC
113 FALSO DRIVE SYRACUSE, N.Y. 13211
Tel: (315)455-2555 Fax:(315)455-2544

ALL DIMENSIONS ARE IN INCHES
TOLERANCES: FRACTIONS ±1/32 DECIMALS XXX=±.005 XX =±.01 X=±.1
ANGLES ±.5° ALLOVER FINISH 25 Ra
CONCENTRICITY .005 TOTAL INDICATOR RUN OUT
PERPENDICULAR ±.002 (UNLESS OTHERWISE SPECIFIED)

NAME: PT30-RM CRYOREFRIGERATOR

DWG #: PT30-RM SYSTEM SHT 1 OF 1

MATERIAL: AS STATED

DWN BY: BMR DATE: 01MAR11 SCALE: TO FIT DWG SIZE: A

1ST CHK: AO DATE: 01MAR11 2ND CHK: PB DATE: 01MAR11

CUST: BTA:

ECN	ZONE	REV	DESCRIPTION	DATE
3940	-	A	CP100 COMPRESSORS REPLACE CP800's	16MAR17
2577	-	-	INITIAL RELEASE	01MAR11

2

1