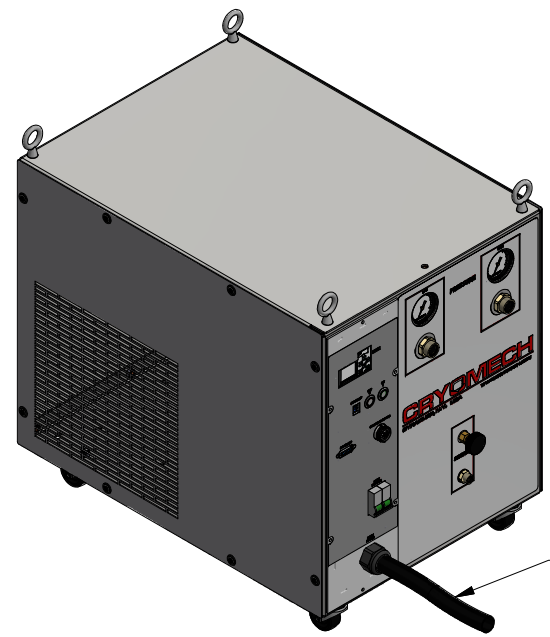


PT30 REV A

ALL INFORMATION CONTAINED IN THIS DOCUMENT SHOULD BE USED FOR REFERENCE PURPOSES ONLY & ARE SUBJECT TO CHANGE WITHOUT PRIOR NOTIFICATION. ALSO, THIS DOCUMENT IS CONSIDERED PROPRIETARY & THE SOLE PROPERTY OF CRYOMECH, INC. & SHOULD NOT BE REPRODUCED IN ANY MANNER WITHOUT PRIOR WRITTEN APPROVAL.

B

B



1/2" AEROQUIP

1/2" AEROQUIP

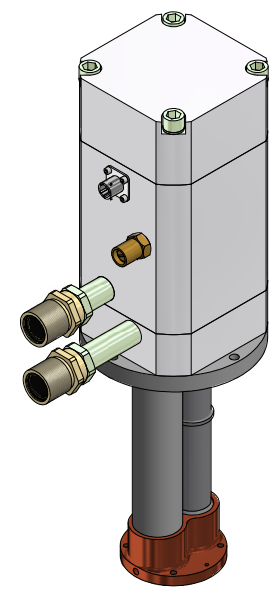
(2) HELIUM FLEX LINES 1/2" ID
STANDARD LENGTH: 10ft
LONGER LENGTHS AVAILABLE

1/2" AEROQUIP

1/2" AEROQUIP

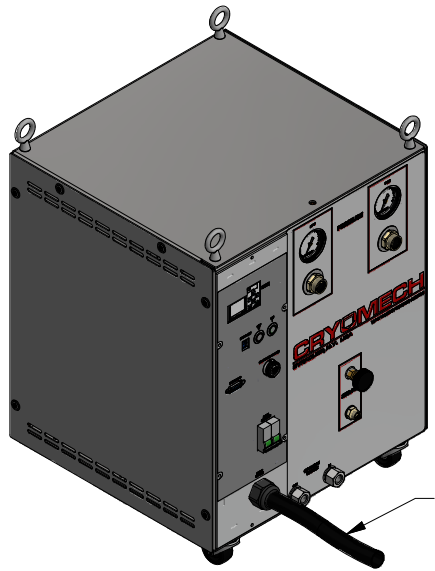
POWER CORD

COLDHEAD MOTOR CORD (SAME LENGTH AS FLEX LINES)



A

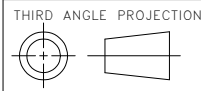
A



POWER CORD

MANUAL

TOOL KIT



CRYOMECH, INC
113 FALSO DRIVE SYRACUSE, N.Y. 13211
Tel: (315)455-2555 Fax:(315)455-2544

ALL DIMENSIONS ARE IN INCHES
TOLERANCES: FRACTIONS ±1/32 DECIMALS .XXX=±.005 XX =±.01 X=±.1
ANGLES ±.5° ALLOVER FINISH 25 Ra
CONCENTRICITY .005 TOTAL INDICATOR RUN OUT
PERPENDICULAR ±.002 (UNLESS OTHERWISE SPECIFIED)

NAME: PT30 SYSTEM DRAWING

DWG #: PT30 SHT 1 OF 1

MATERIAL: AS STATED

DWN BY: BMR DATE: 26SEP06 SCALE: TO FIT DWG SIZE: A

1ST CHK: AO DATE: 11JUL07 2ND CHK: NLO DATE: 11JUL07

CUST: - BTA: -

ECN	ZONE	REV	DESCRIPTION	DATE
3940	-	A	CP100 COMPRESSORS REPLACE CP800's	16MAR17
1419	-	-	INITIAL RELEASE	03JUL07

2

1