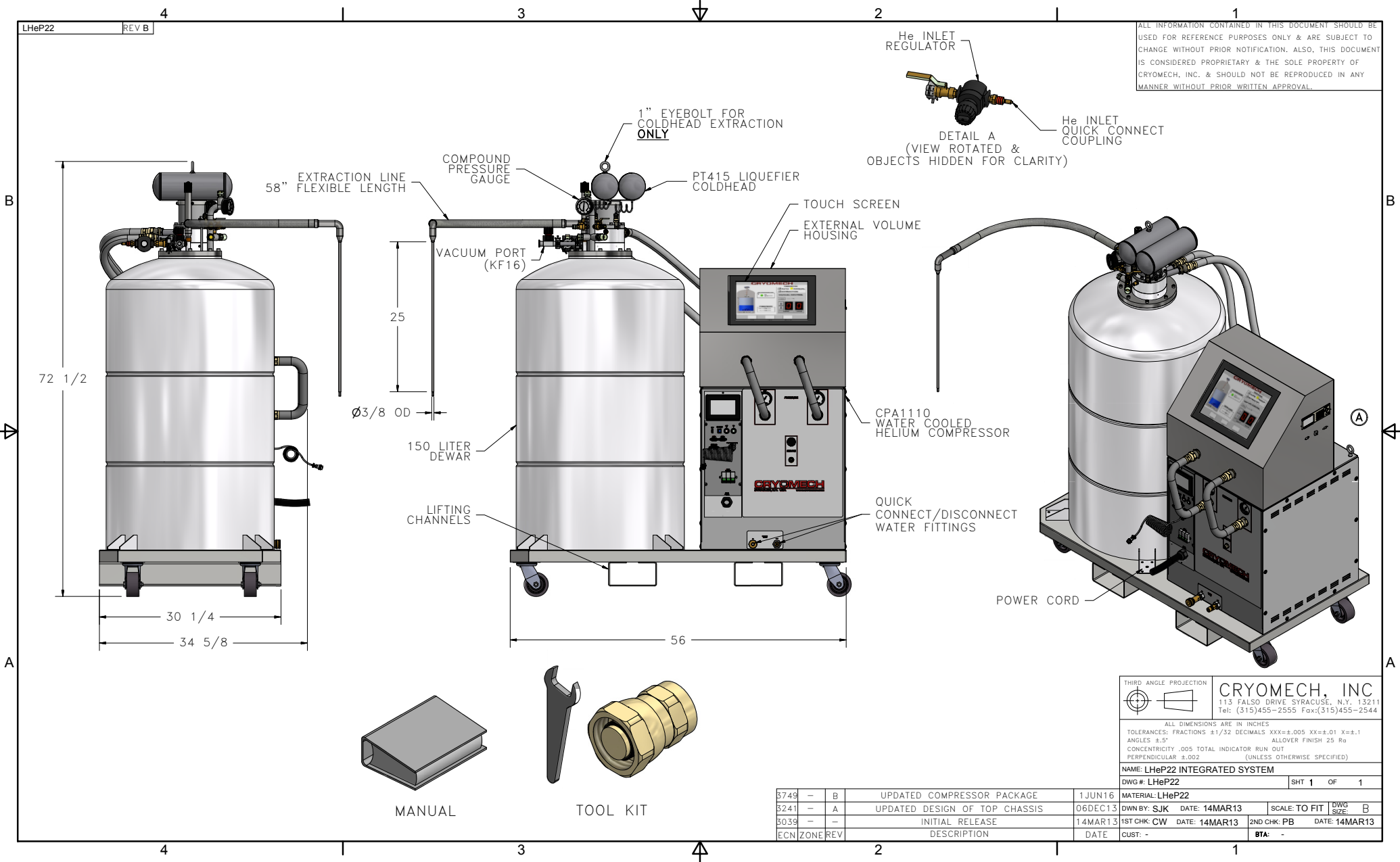


LHeP22 REV B

ALL INFORMATION CONTAINED IN THIS DOCUMENT SHOULD BE USED FOR REFERENCE PURPOSES ONLY & ARE SUBJECT TO CHANGE WITHOUT PRIOR NOTIFICATION. ALSO, THIS DOCUMENT IS CONSIDERED PROPRIETARY & THE SOLE PROPERTY OF CRYOMECH, INC. & SHOULD NOT BE REPRODUCED IN ANY MANNER WITHOUT PRIOR WRITTEN APPROVAL.



THIRD ANGLE PROJECTION

CRYOMECH, INC.
 113 FALSO DRIVE SYRACUSE, N.Y. 13211
 Tel: (315)455-2555 Fax:(315)455-2544

ALL DIMENSIONS ARE IN INCHES
 TOLERANCES: FRACTIONS ±1/32 DECIMALS XXX=±.005 XX=±.01 X=±.1
 ANGLES ±.5° ALLOWER FINISH 25 Ra
 CONCENTRICITY .005 TOTAL INDICATOR RUN OUT
 PERPENDICULAR ±.002 (UNLESS OTHERWISE SPECIFIED)

NAME: LHeP22 INTEGRATED SYSTEM
 DWG #: LHeP22 SHT 1 OF 1

5749	-	B	UPDATED COMPRESSOR PACKAGE	1JUN16	MATERIAL: LHeP22
3241	-	A	UPDATED DESIGN OF TOP CHASSIS	06DEC13	DWN BY: SJK DATE: 14MAR13 SCALE: TO FIT DWG SIZE: B
3039	-	-	INITIAL RELEASE	14MAR13	1ST CHK: CW DATE: 14MAR13 2ND CHK: PB DATE: 14MAR13
ECN	ZONE	REV	DESCRIPTION	DATE	CUST: - BTA: -