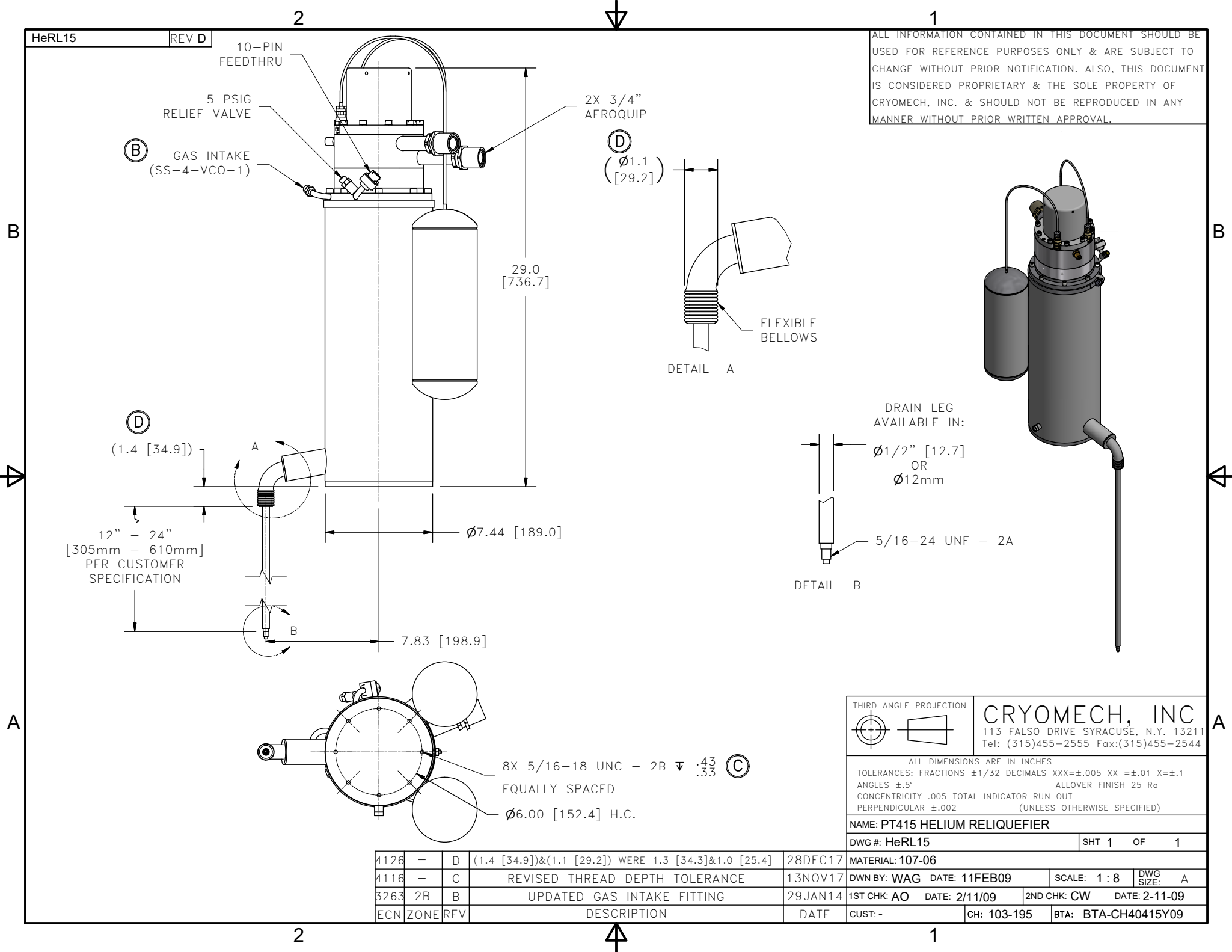
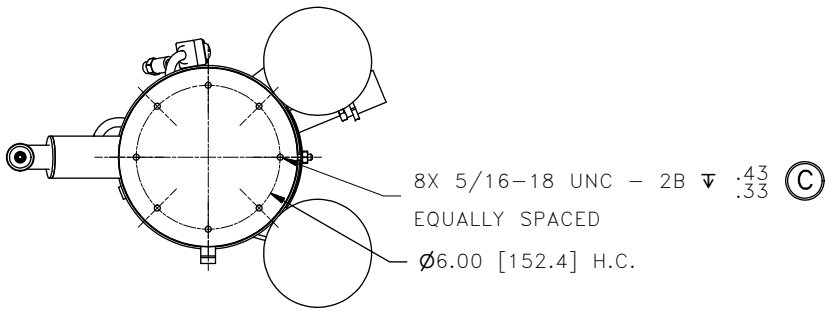


ALL INFORMATION CONTAINED IN THIS DOCUMENT SHOULD BE USED FOR REFERENCE PURPOSES ONLY & ARE SUBJECT TO CHANGE WITHOUT PRIOR NOTIFICATION. ALSO, THIS DOCUMENT IS CONSIDERED PROPRIETARY & THE SOLE PROPERTY OF CRYOMECH, INC. & SHOULD NOT BE REPRODUCED IN ANY MANNER WITHOUT PRIOR WRITTEN APPROVAL.



DRAIN LEG AVAILABLE IN:  
 $\varnothing 1/2"$  [12.7]  
 OR  
 $\varnothing 12\text{mm}$   
 5/16-24 UNF - 2A



THIRD ANGLE PROJECTION		CRYOMECH, INC	
		113 FALSO DRIVE SYRACUSE, N.Y. 13211 Tel: (315)455-2555 Fax:(315)455-2544	
ALL DIMENSIONS ARE IN INCHES TOLERANCES: FRACTIONS $\pm 1/32$ DECIMALS $XXX = \pm .005$ $XX = \pm .01$ $X = \pm .1$ ANGLES $\pm .5^\circ$ ALLOVER FINISH 25 Ra CONCENTRICITY .005 TOTAL INDICATOR RUN OUT PERPENDICULAR $\pm .002$ (UNLESS OTHERWISE SPECIFIED)			
NAME: PT415 HELIUM RELIQUEFIER			
DWG #: HeRL15		SHT 1 OF 1	
MATERIAL: 107-06			
DWN BY: WAG		DATE: 11FEB09	SCALE: 1:8
1ST CHK: AO		DATE: 2/11/09	2ND CHK: CW
DATE: 2-11-09		DATE: 2-11-09	
CUST: -		CH: 103-195	BTA: BTA-CH40415Y09

ECN	ZONE	REV	DESCRIPTION	DATE
4126	-	D	(1.4 [34.9]) & (1.1 [29.2]) WERE 1.3 [34.3] & 1.0 [25.4]	28DEC17
4116	-	C	REVISED THREAD DEPTH TOLERANCE	13NOV17
3263	2B	B	UPDATED GAS INTAKE FITTING	29JAN14