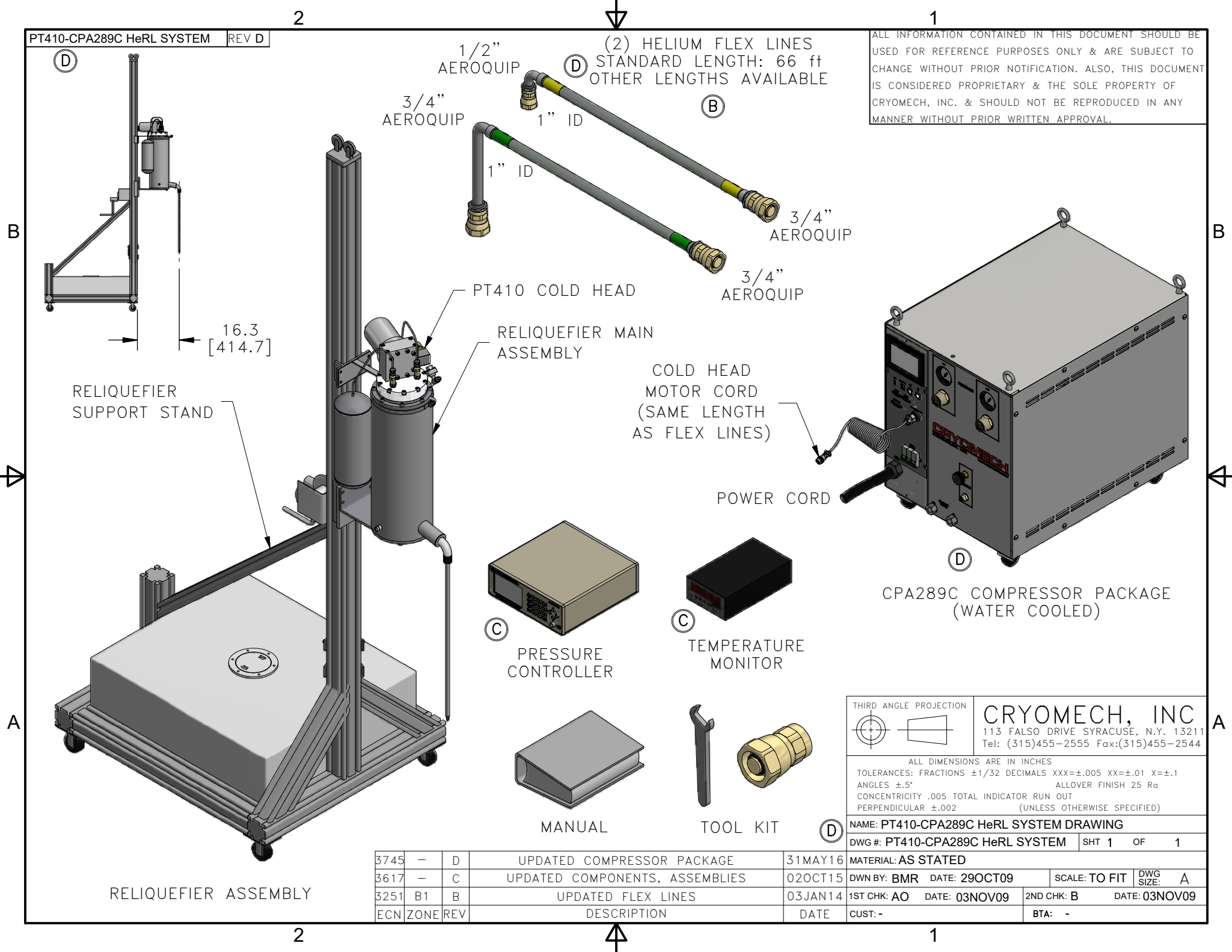


1
ALL INFORMATION CONTAINED IN THIS DOCUMENT SHOULD BE USED FOR REFERENCE PURPOSES ONLY & ARE SUBJECT TO CHANGE WITHOUT PRIOR NOTIFICATION. ALSO, THIS DOCUMENT IS CONSIDERED PROPRIETARY & THE SOLE PROPERTY OF CRYOMECH, INC. & SHOULD NOT BE REPRODUCED IN ANY MANNER WITHOUT PRIOR WRITTEN APPROVAL.



ECN	ZONE	REV	DESCRIPTION	DATE
3745	-	D	UPDATED COMPRESSOR PACKAGE	31MAY16
3617	-	C	UPDATED COMPONENTS, ASSEMBLIES	02OCT15
3251	B1	B	UPDATED FLEX LINES	03JAN14

THIRD ANGLE PROJECTION

CRYOMECH, INC
113 FALSO DRIVE SYRACUSE, N.Y. 13211
Tel: (315)455-2555 Fax:(315)455-2544

ALL DIMENSIONS ARE IN INCHES
TOLERANCES: FRACTIONS ±1/32 DECIMALS XXX=±.005 XX=±.01 X=±.1
ANGLES ±.5° ALLOVER FINISH 25 Ra
CONCENTRICITY .005 TOTAL INDICATOR RUN OUT
PERPENDICULAR ±.002 (UNLESS OTHERWISE SPECIFIED)

NAME: PT410-CPA289C HeRL SYSTEM DRAWING
DWG #: PT410-CPA289C HeRL SYSTEM SHT 1 OF 1
MATERIAL: AS STATED
DWN BY: BMR DATE: 29OCT09 SCALE: TO FIT DWG SIZE: A
1ST CHK: AO DATE: 03NOV09 2ND CHK: B DATE: 03NOV09
CUST: - BTA: -

RELIQUEFIER ASSEMBLY

CPA289C COMPRESSOR PACKAGE (WATER COOLED)

MANUAL

TOOL KIT